

Features

Simplification

Number of processed parts : 34

Small in Size and Yet Large in Power

Maximum capacity 60 kg/h

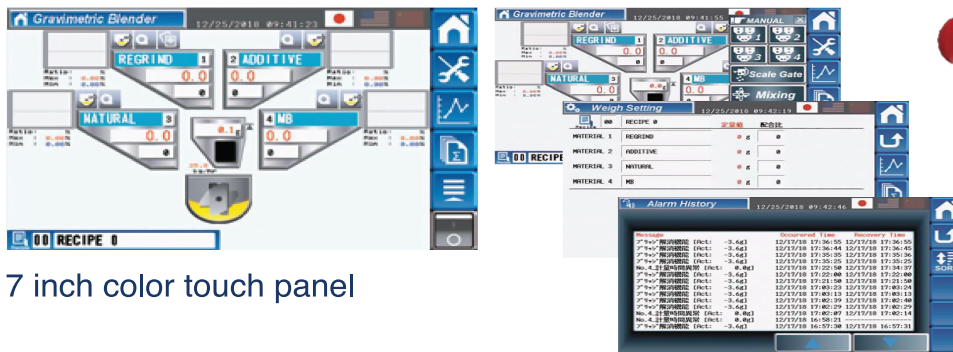
Equipped with High-Performance Amplifier

High speed sampling high resolution, high performance vibration removal filter

Ultra Low Price

Ultra low price achieved by simple design, cost-effective amplifier, review of production method

Operation Panel



7 inch color touch panel

Gravimetric Blender

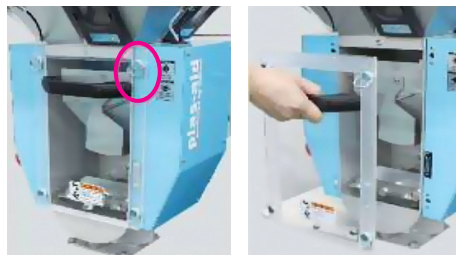


Demounting of Material Hopper



Material Hopper properly mounted
Demounting Material Hopper
* The material hopper is hooked and fixed onto the frame of the main body

Front Door



Door closed
Door open
* Turn the knob to open the door

Measuring Hopper



Demounting of Measuring hopper

Demounting of Measuring Hopper

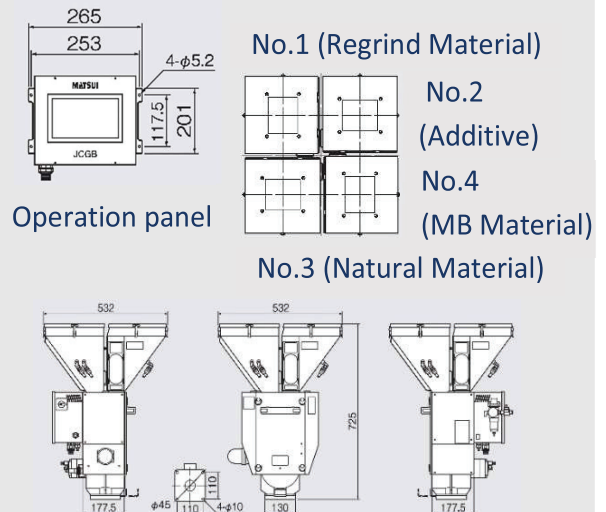


Demounting is to be fixed by inserting connection boss pin

Standard Specification

Model	Unit	JCGB-G1-064
Power Supply	Voltage	V
	Apparent Power	VA
	Pressure	MPa
Air Supply	Consumption	NL/min
	Maximum Measuring Capacity	kg/h
Measurement Type		Batch type mass weighing by load cell
Number of Components	Points	4 (fixed)
Hopper Volume	Virgin Material	L
	Regrind Material	L
	MB Material	L
	Addition Material	L
Measuring Hopper	Effective Volume	L
	Discharge Method	
Supply Method of Materials	Virgin Material	
	Regrind Material	
	MB Material	
	Addition Material	
Measurement Accuracy	Materials	%
Volume per Batch		kg
Blending Section	Blending Method	
	Effective Volume	L
Outer Dimension	W	mm
	D	mm
	H	mm
Product Weight		kg

Outer Dimension



Options

- Lower limit level switch
- Frame
- Heat-resistant spec
- Pneumatic conveying
- Top cover for manual charge
- Residual material extraction chute
- Pressure sensor
- Air gun